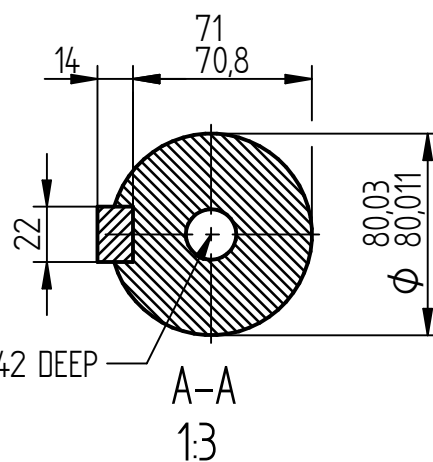
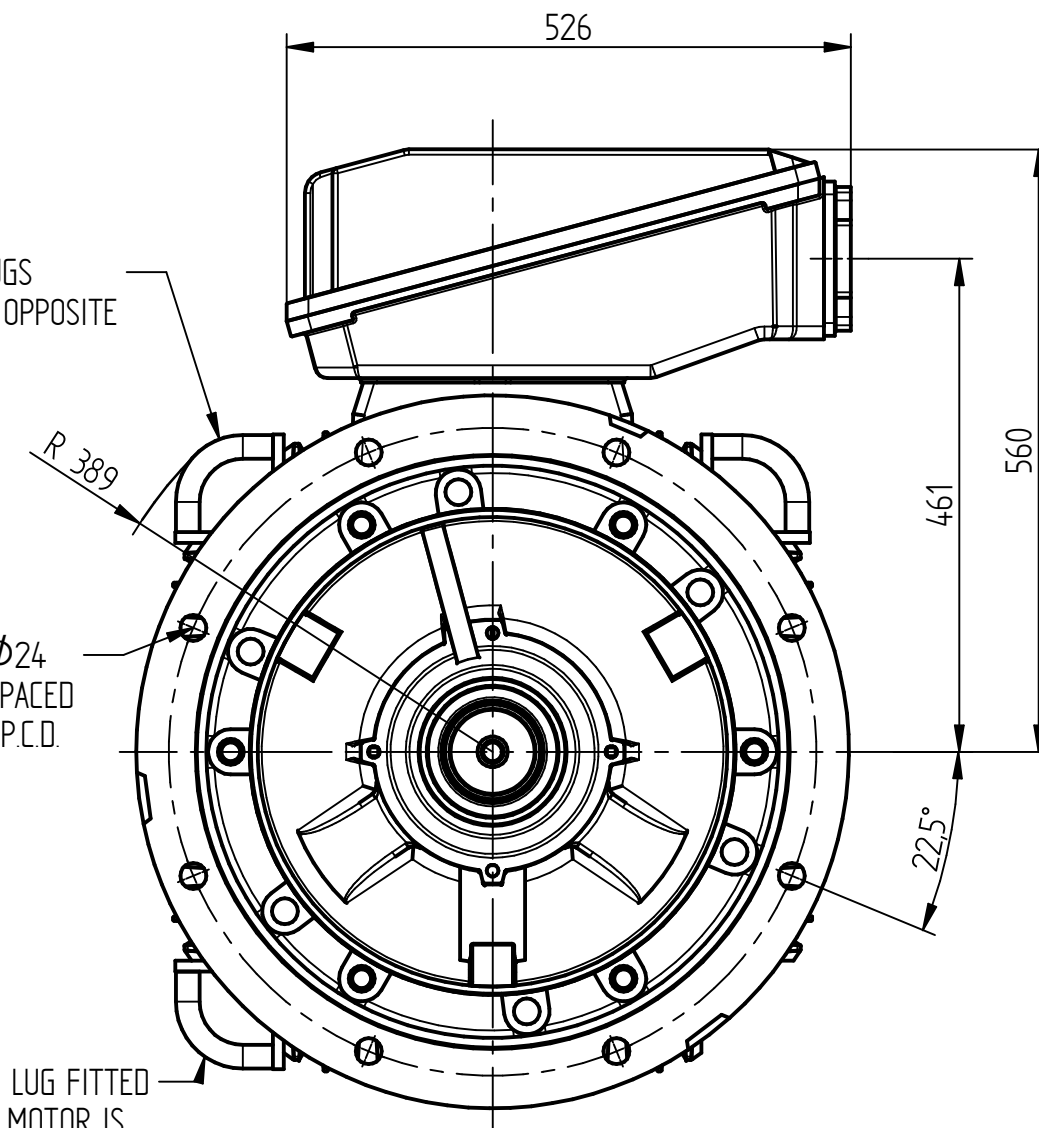


3 LIFTING LUGS  
DIAGONALLY OPPOSITE

8 HOLES  $\phi 24$   
EQUALLY SPACED  
ON A 600 P.C.D.

THE LIFTING LUG FITTED  
ONLY WHEN MOTOR IS  
VERTICALLY MOUNTED



HOLE TAPPED M20 x 42 DEEP  
TO DIN 332 FORM 'D'

#### TERMINAL BOX POSITION:

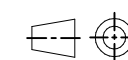
- CAN BE ARRANGED AT EITHER 9, 12 OR 3 O'CLOCK.
- STANDARD TERMINAL BOX POSITION IS 12 O'CLOCK AS SHOWN.

#### CONDUIT ENTRIES:

- TERMINAL BOX CAN BE ROTATED AT 90° INTERVALS.

ALL MOUNTING DIMENSIONS: ISO 2768-mK ACC TO EN 22768-1/2

ALL DIMENSIONS IN MILLIMETERS



FIRST ANGLE  
PROJECTION

**BROOK  
CROMPTON**

Produced by ATB Tamel S.A. a company of **ATB**  
Technology in Motion

SHEET  
SIZE

A3

TITLE:

OUTLINE DIMENSION DRAWING TOTALLY ENCLOSED FAN COOLED  
WP-DF315M 4P FRAME D FLANGE MOUNTED MOTOR

	NAME	DATE
DRAWN	SZ	26-06-19
CHECKED	PG	26-06-19
SCALE	1 : 7	

DRG. No. WP-DF315M B5 4P

DRG. REF.

REVISION:

DATE: